

“Floral Embroidered Top”



Take a seemingly ordinary design to a design that can be embroidered on the finest of fabrics with no worry. When embroidering on light weight fabrics, DensityWorks™ is truly a hero. You will be amazed how easy it is to use.

Skill Level: Easy- Intermediate

Created by: Diane Kron, Software and Embroidery Project Manager

Supplies:

DensityWorks™ by Designer's Gallery® (Installed)

CustomWorks™ by Designer's Gallery® (Installed)

SizeWorks™ by Designer's Gallery® (Installed)

Baby Lock® sewing and embroidery machine

Amazing Design's Jacobean Floral 1 design collection (ADC-55J)

Vogue Pattern V8196 or similar

Fabric & accessories based on view A as shown on pattern instruction (Dotted Swiss was used in the sample)

Baby Lock Dissolve-Away Mesh stabilizer



Temporary spray adhesive

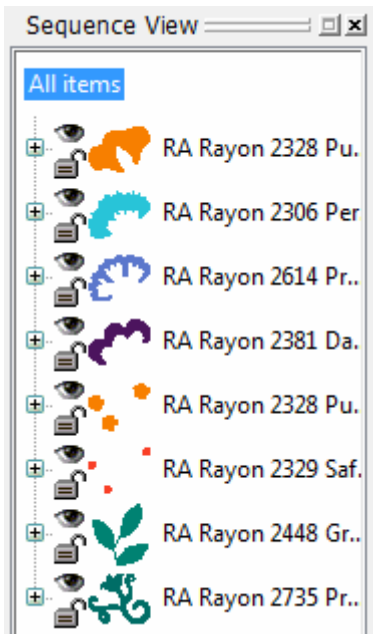
Sewing and embroidery threads

Basic sewing and embroidery supplies

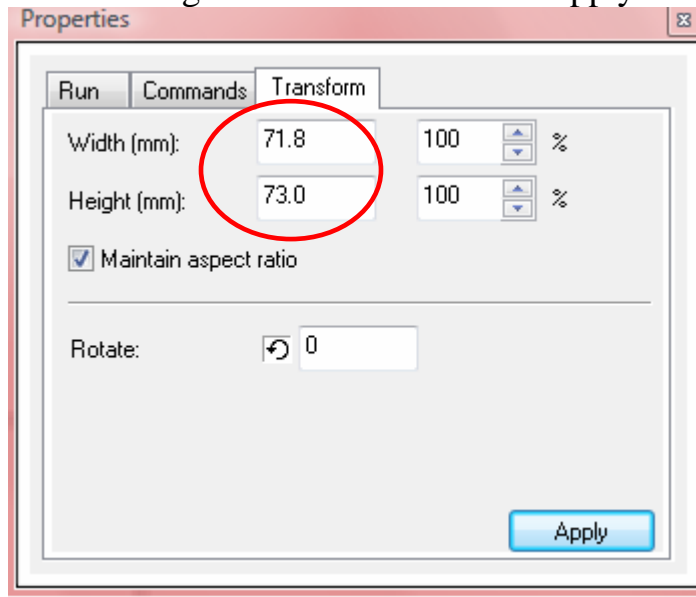
Instructions:

At the Computer:

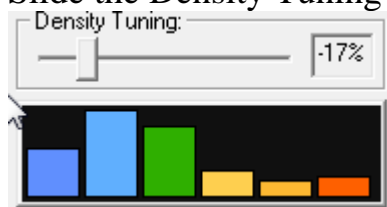
1. Open the program by clicking on the CustomWorks  icon on the desktop.
2. Click on Merge Design  icon on the top toolbar. Open Jacobean Floral 1 and retrieve design Number JF113 from the installed location.
3. Click on All Items under Sequence View.



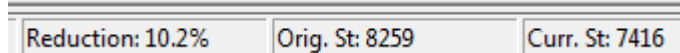
- Click on Properties and select The Transform tab. Resize the design so that the Height is 73mm. Click on Apply. SizeWorks was used here.





- To adjust the density of the design, click on the Density Icon .
- Slide the Density Tuning to the left to reflect 17% decrease.




Under the Status bar you will see an Original and a Current stitch count (*as shown in the illustration below*).



- After the density has been adjusted, click on Save. When the dialog box opens click on Exit. The adjusted design is back on the original workspace.
- Click on the 3D  icon to view the design in its embroidered state. The original design was not too dense for most fabrics, but for finer fabrics, changing the density is a must.
- The next step will be to change colors in the design. The finished design has only two colors. Select the first, second and fifth colors in the design by holding down the Ctrl key. Change the color to Black from the Color Palette. The remaining colors will be colored red. Make the color change at this time by selecting each of those areas.

- Once the colors are changed, click on the Color Sort  icon to sort the colors.

- Since the design (*as shown in the sample*) was embroidered several times, print out a template for placement accuracy by clicking on the

Print icon . In the print field, click on Print. Create two copies of the template. Set the templates aside.

Embroidery:

1. Following the pattern directions for layout and assembly of the top.
2. When you have completed step 5, stop. Hoop the stabilizer using the 4mm x 4mm hoop.
3. Lightly spray the stabilizer with the temporary spray adhesive.
4. Pin the templates to the inset band with two flowers on each of the front sections (Piece 4). Place the design in the hoop using the cross marks on the template so that they line up with the marks on each of the four sides of the hoop. Embroider the design. Repeat for each design placement. In the sample. Three designs were placed on the back inset piece (5).
5. Continue with step 6 on the pattern guide until the garment is complete.

For other exciting projects like this one, visit our Web site at www.designersgallerysoftware.com